

LEGEND		
ITEM	EXISTING	ULTIMATE
SIXTEENTH SECTION-LINE	---	---
QUARTER SECTION-LINE	---	---
SECTION-LINE	---	---
PROPERTY-LINE	---	---
RUNWAY CENTERLINE	---	SAME
RW/TW OBJECT FREE AREA (ROFA/TOFA)	-ROFA-TOFA-	SAME
RUNWAY OBSTACLE FREE ZONE (ROFZ)	ROFZ	SAME
RUNWAY SAFETY AREA (RSA)	RSA	SAME
RUNWAY PROTECTION ZONE (RPZ)	---	---
RUNWAY VISIBILITY ZONE (RVZ)	--RVZ--	SAME
DITCH / DRAINAGE	---	SAME
FENCE	---	SAME
BUILDINGS	---	---
BITUMINOUS SURFACE	---	---
G.P.S. MONUMENT	---	SAME
AIRPORT REFERENCE POINT	---	---
THRESHOLD LIGHTS	---	SAME
DRAINAGE CULVERT	---	SAME
BEACON	---	SAME
AUTOMATED WEATHER OBSERVING SYSTEM	---	SAME

**AIRPORT LAYOUT PLAN APPROVED**

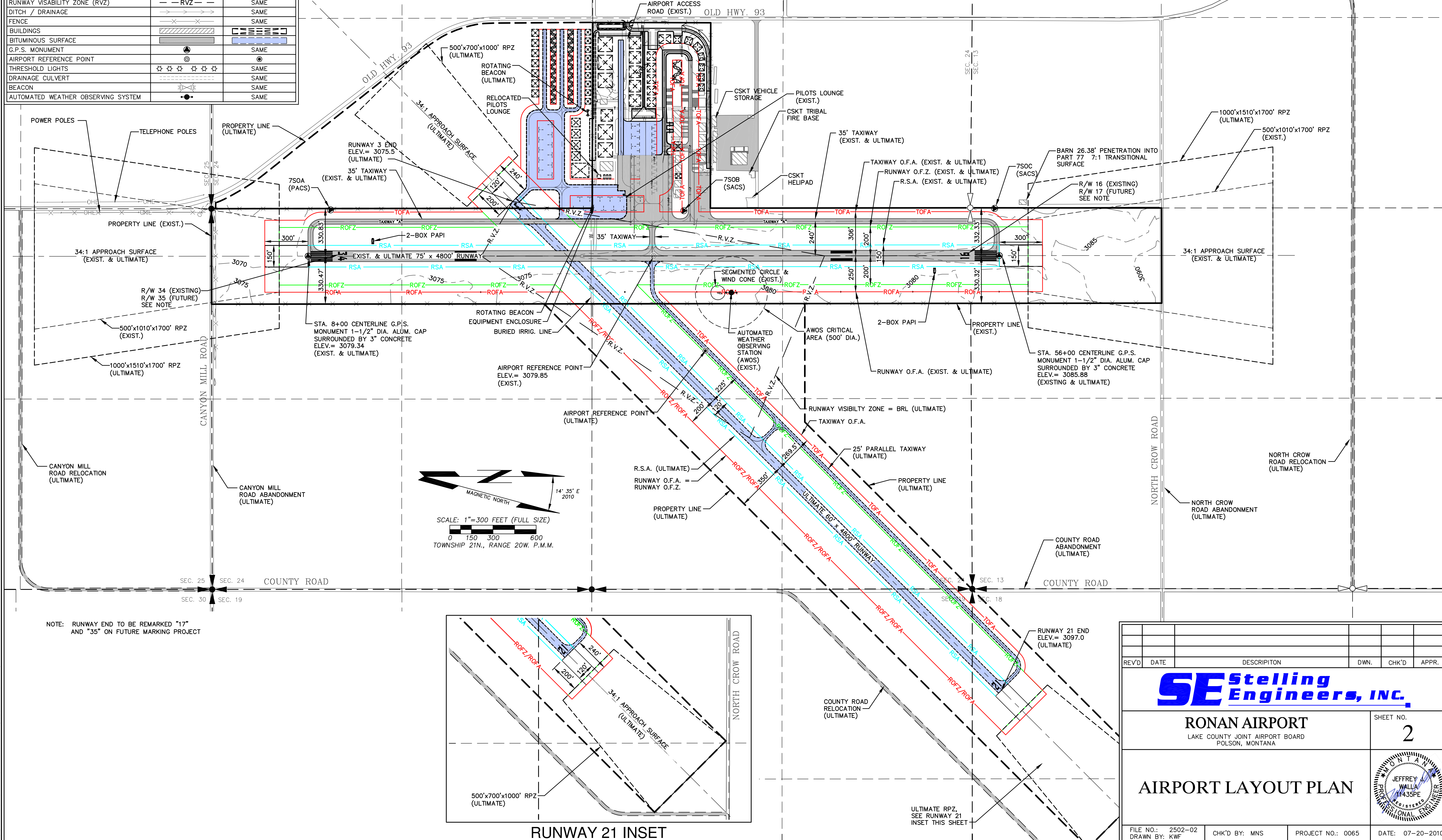
BY: \_\_\_\_\_ DATE: \_\_\_\_\_  
 Paddy Trusler, Commissioner  
 LAKE COUNTY COMMISSION

**AIRPORT LAYOUT PLAN APPROVED**

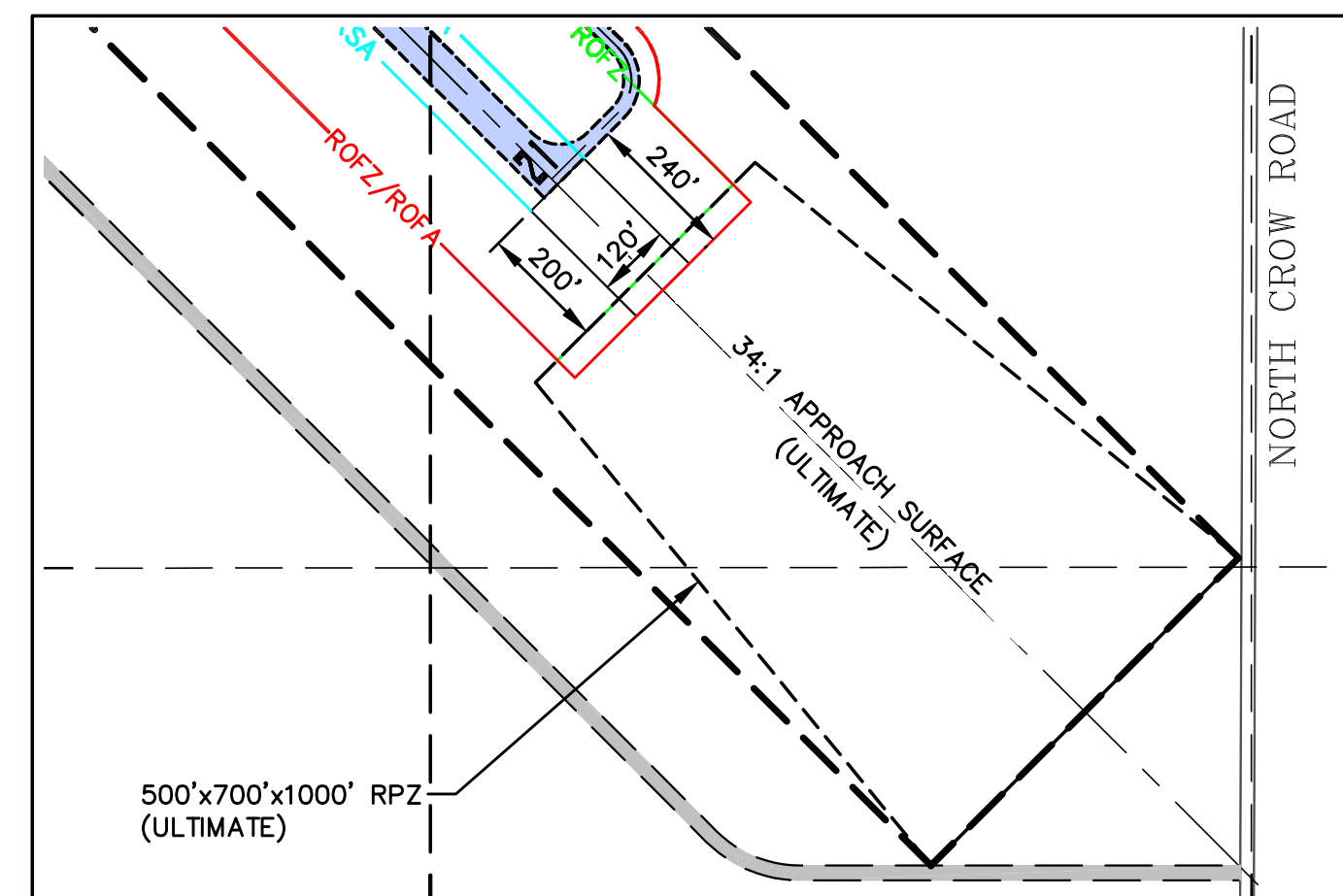
BY: \_\_\_\_\_ DATE: \_\_\_\_\_  
 Kim Aipperspach, Mayor  
 CITY OF RONAN

**NON-STANDARD CONDITIONS**

NONE



NOTE: RUNWAY END TO BE REMARKED "17" AND "35" ON FUTURE MARKING PROJECT



REV'D	DATE	DESCRIPTION	DWN.	CHK'D	APPR.
<b>RONAN AIRPORT</b> LAKE COUNTY JOINT AIRPORT BOARD POLSON, MONTANA					SHEET NO. <b>2</b>
<b>AIRPORT LAYOUT PLAN</b>					
FILE NO.: 2502-02	CHK'D BY: MNS	PROJECT NO.: 0065	DATE: 07-20-2010		
DRAWN BY: KWF					